



SPIGOT SILENCER

SPIGOT SILENCER

Overview

- Small metric range of attenuators with spigot connection
- Ideal for small fans
- Ideal for cross talk elimination
- Ideal for flexible or spiral ducting



Construction

Both types are rigidly constructed in galvanised sheet steel, with a highly absorbent sound attenuating lining between the outer casing and the inner perforated steel lining. The end faces of the silencer do not have threaded holes for fixings, but has a steel spigot for ease of mounting.

Melinex lined silencers must be used to prevent grease impregnation into the acoustic media for kitchen extract applications as prescribed in DW/172 HVAC Specification For Kitchen Ventilation Systems. For Melinex insertion losses, please contact Elta Fans. Silencers can be provided with differing lengths: 300, 600, 900 and 1200mm.

Silencer Attenuation

To determine the sound level of a fan fitted with a silencer, the dynamic insertion loss should be subtracted from the sound power level spectrum (dBW) of the fan. This should be done for the entire octave band mid-frequency spectrum. The fan dBW ratings and silencer attenuation apply equally to in duct applications, with a silencer connected between the fan and the duct system.

Dynamic Insertion Loss

The silencer attenuation is defined as the “dynamic insertion loss”. The values quoted in the tables represent the difference between the sound power level of a fan and silencer combination (dBW) and that of the fan alone (dBW). The dynamic insertion losses shown are the attenuations recorded under ideal working conditions. The achieved attenuation will vary according to the air velocity and flow pattern in the airways. Noise regeneration can occur at higher velocities, especially in EP silencers.

Square / Rectangular Silencers

In highly noise sensitive areas, where the circular silencers cannot achieve the necessary attenuation levels, we can design and build optional splitter silencers for greater effect.

SPIGOT SILENCER

Dynamic Insertion Loss

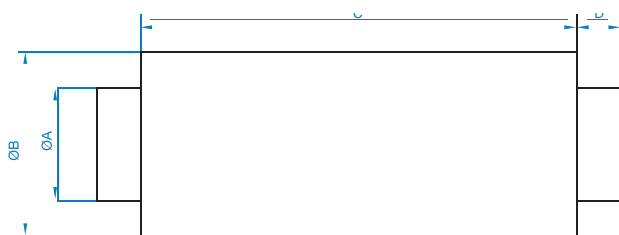
Spigot Ø100-500

Product Code	Length	Insertion Loss @ Octave band (Hz)							
		63	125	250	500	1K	2K	4K	8K
CA2510003	300mm	-3	-4	-9	-17	-23	-26	-25	-14
CA2510006	600mm	-5	-8	-15	-33	-39	-40	-36	-20
CA2510009	900mm	-10	-13	-21	-40	-45	-40	-36	-24
CA2510012	1200mm	-12	-15	-23	-42	-47	-42	-38	-26
CA2512503	300mm	-3	-3	-8	-16	-21	-24	-22	-12
CA2512506	600mm	-4	-8	-13	-30	-35	-35	-31	-15
CA2512509	900mm	-9	-12	-18	-37	-41	-38	-34	-20
CA2512512	1200mm	-11	-15	-21	-40	-46	-41	-36	-23
CA2515003	300mm	-3	-3	-6	-14	-19	-23	-22	-11
CA2515006	600mm	-4	-7	-12	-23	-30	-36	-31	-15
CA2515009	900mm	-8	-9	-15	-31	-37	-37	-34	-18
CA2515012	1200mm	-10	-14	-17	-34	-41	-40	-36	-20
CA2516003	300mm	-3	-3	-6	-14	-19	-23	-22	-11
CA2516006	600mm	-4	-7	-12	-23	-29	-35	-30	-15
CA2516009	900mm	-8	-9	-15	-31	-37	-37	-34	-18
CA2516012	1200mm	-10	-14	-18	-33	-40	-39	-35	-18
CA2520003	300mm	-2	-3	-6	-13	-17	-20	-18	-9
CA2520006	600mm	-4	-6	-10	-20	-27	-32	-20	-11
CA2520009	900mm	-7	-9	-14	-32	-39	-36	-26	-15
CA2520012	1200mm	-10	-12	-17	-35	-41	-44	-28	-16
CA2525003	300mm	-2	-3	-6	-12	-16	-19	-17	-8
CA2525006	600mm	-3	-6	-10	-19	-25	-29	-18	-10
CA2525009	900mm	-5	-8	-12	-24	-30	-30	-22	-14
CA2525012	1200mm	-7	-10	-15	-31	-37	-38	-26	-15
CA2531503	300mm	-1	-3	-6	-12	-15	-18	-16	-8
CA2531506	600mm	-3	-5	-8	-16	-21	-22	-16	-14
CA2531509	900mm	-4	-7	-10	-20	-31	-28	-17	-14
CA2531512	1200mm	-6	-9	-14	-23	-32	-32	-18	-15
CA2535503	300mm	-1	-3	-6	-12	-15	-18	-16	-8
CA2535506	600mm	-3	-4	-7	-15	-19	-20	-15	-13
CA2535509	900mm	-4	-7	-9	-19	-28	-25	-16	-13
CA2535512	1200mm	-5	-8	-13	-22	-31	-29	-17	-14
CA2540003	300mm	-1	-2	-4	-11	-15	-15	-12	-8
CA2540006	600mm	-2	-4	-7	-14	-17	-18	-14	-11
CA2540009	900mm	-3	-6	-9	-18	-26	-23	-15	-12
CA2540012	1200mm	-5	-8	-13	-22	-30	-27	-17	-12
CA2550003	300mm	-1	-1	-3	-10	-14	-14	-11	-7
CA2550006	600mm	-2	-4	-6	-14	-16	-16	-13	-11
CA2550009	900mm	-3	-6	-8	-17	-24	-21	-15	-11
CA2550012	1200mm	-4	-8	-12	-19	-28	-23	-16	-12

SPIGOT SILENCER

Dimensional Data

Product Code	Fan Dia.	A	B	C	D	Weight kg
CA2510003	100	98	204	300	40	2.5
CA2510006	100	98	204	600	40	4.6
CA2510009	100	98	204	900	40	6.7
CA2510012	100	98	204	1200	40	8.7
CA2512503	125	123	230	300	40	2.9
CA2512506	125	123	230	600	40	5.4
CA2512509	125	123	230	900	40	7.8
CA2512512	125	123	230	900	40	10.2
CA2515003	150	148	255	300	40	3.4
CA2515006	150	148	255	600	40	6.1
CA2515009	150	148	255	900	40	8.9
CA2515012	150	148	255	1200	40	11.6
CA2516003	160	158	265	300	40	3.5
CA2516006	160	158	265	600	40	6.4
CA2516009	160	158	265	900	40	9.3
CA2516012	160	158	265	1200	40	12.2
CA2520003	200	198	305	300	40	4.2
CA2520006	200	198	305	600	40	7.6
CA2520009	200	198	305	900	40	11.0
CA2520012	200	198	305	1200	40	14.5
CA2525003	250	248	355	300	40	5.0
CA2525006	250	248	355	600	40	9.1
CA2525009	250	248	355	900	40	13.2
CA2525012	250	248	355	1200	40	17.3
CA2531503	315	313	420	300	40	6.1
CA2531506	315	313	420	600	40	11.1
CA2531509	315	313	420	900	40	16.1
CA2531512	315	313	420	1200	40	21.0
CA2535503	355	353	460	300	40	6.8
CA2535506	355	353	460	600	40	12.3
CA2535506	355	353	460	900	40	17.8
CA2535512	355	353	460	1200	40	23.3
CA2540003	400	398	505	300	40	7.5
CA2540006	400	398	505	600	40	13.6
CA2540009	400	398	505	900	40	19.8
CA2540012	400	398	505	1200	40	25.9
CA2550003	500	498	654	300	40	13.2
CA2550006	500	498	654	600	40	26.4
CA2550009	500	498	654	900	40	39.6
CA2550012	500	498	654	1200	40	52.8





Tel **+44 (0) 1902 895161**
Fax **+44 (0) 1902 892045**
Email **sales@has-vent.co.uk**

Heath Mill Road, Wombourne,
Wolverhampton, WV5 8AP United Kingdom

has-vent.co.uk